

A scenic sunset over a large lake. The sun is low on the horizon, casting a warm orange glow across the sky and reflecting on the water. A small boat is visible on the water in the foreground. The shoreline is lined with trees and some structures.

DESTINATION CLARENDON

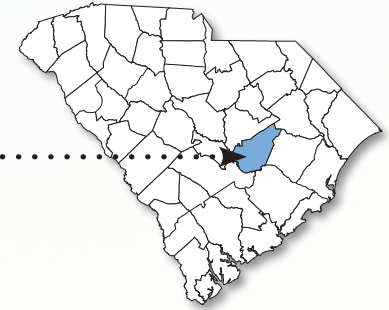
A RELOCATION GUIDE TO CLARENDON COUNTY

HOME OF THE LARGEST LAKE IN SOUTH CAROLINA

CLARENDON COUNTY

Destination Clarendon

The hidden gem of the Palmetto State



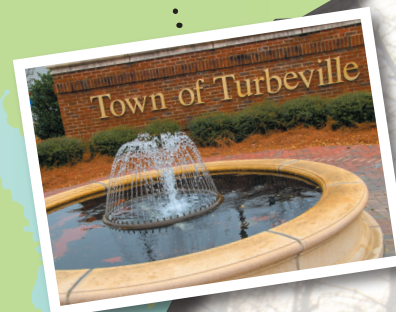
Welcome to Clarendon County, the hidden gem of the Palmetto State. Ripe with nature and full of possibilities, you're sure to fall in love with our area. Home to Lake Marion, the largest lake in South Carolina, we are an outdoor enthusiast's dream destination. Fishing, boating, hunting and golf are just a few favorite pastimes found in our county.

We are centrally located, just a quick drive to Columbia, the state capital, historic Charleston and pristine beaches from the Lowcountry to the Grand Strand.

Historic 301 makes its way through our county and we are conveniently located on the I-95 corridor.

Please take time to explore our county and be prepared to be impressed with what you discover!





You Can Get There From Here

Distances to Major Southeast Cities

Cities	Miles
Florence, SC	45
Columbia, SC	52
Charleston, SC	65
Myrtle Beach, SC	94
Charlotte, NC	109
Savannah, GA	123
Atlanta, GA	205

CLARENDON COUNTY

Destination Lifestyle

A charming way of life



Clarendon County consists of four incorporated towns: Manning, Paxville, Summerton and Turbeville, as well as miles of beautiful rural countryside.

Quaint shops and eateries can be found throughout the town of Manning. The historic county courthouse is located in the heart of town. Circa 1858, the courthouse remains a beautiful focal point

of the city and an active workplace for many locals.

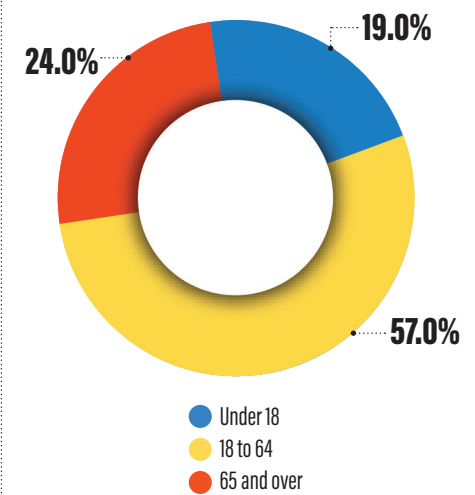
Family-owned and -operated bistros, bakeries and farm fresh produce can be found in the towns of Summerton and Paxville.

Several shops and restaurants line the streets of Turbeville. The town hosts numerous sporting events and tournaments at its recreation complex throughout the year.

Fast Fact:
56 people per
square mile



Population by Age



Source: [CensusReporter.org](https://censusreporter.org)

CLARENDON COUNTY

Destination Healthcare

McLeod Health Clarendon provides the services you need at the highest quality

McLeod Health Clarendon is here to provide you and your family with the highest-quality healthcare available. Our highly-skilled physicians and medical staff provide a wide range of medical services designed to meet the unique needs of the communities we serve. As part of the McLeod Health system, McLeod



Health Clarendon patients have access to all the services, skills, and technology that make us the choice for medical excellence in our region.

McLeod Health Clarendon offers a wide variety of services. We are committed to the continued growth of our services to meet the ongoing needs of patients in and around Clarendon County.

These are exciting times at McLeod Health Clarendon. We have the services you need *Here and Now*.



803-433-3000 | McLeodHealthClarendon.org
10 East Hospital Street, Manning, S.C. 29102



McLeod Health Clarendon Services

Services Include:

Cardiology

Diagnostic Imaging:

- Mammography
- CT Scan
- MRI

General Surgery

Health & Wellness Center

Spa Services

Home Health

Hospice

Infusions

Laboratory Services

Nerve Conduction

OB/GYN

- Laparoscopic
- Labor & Delivery
- Centering Site
- Pelvic Health
- Midwifery

Orthopaedics

Pediatrics

Podiatry

Rehabilitation Program

- Cardiac
- Physical Therapy
- Occupational Therapy
- Speech Therapy

Sleep Study Program

Swing Bed Unit

Urology

- Vascular Services

Wound Care

CLARENDON COUNTY

Destination Education

Providing a solid foundation for academic excellence and championship sports

Clarendon County is home to three public school systems united under the Clarendon County School District, and several renowned private institutions can also be found here including Laurence Manning Academy and Clarendon Hall.

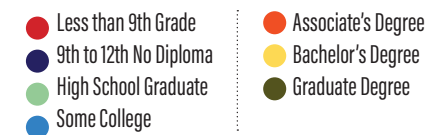
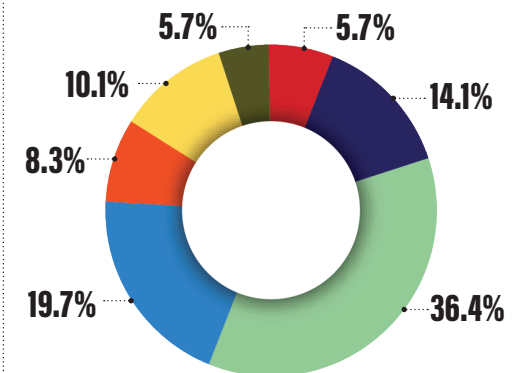
Programs of interest involving our schools include:

- Special Olympics Project Unify (state winners)
- Boys State and Girls State attendees
- Early College Honors Program
- Leadership Development Programs
- Multi-cultural Instructional Staff
- Summer Arts Programs

In addition to the many academic opportunities, students can also participate in championship level athletics. Recently, Clarendon County Schools have competed at the state level in sports ranging from golf, track and field, baseball, softball and basketball. Newly formed programs include volleyball, lacrosse and sports fishing.

Educational Attainment

Population 25 Years and Older



Source: U.S. Census Bureau





We are also home to the F.E. DuBose Career Center. Serving both private and public schools, the center's primary focus is on helping craft the future through educational experiences. Career and Technical Education courses offer students the option to take engaging, rigorous classes. Several of the programs include

ready to work credentials that increase a student's chances of success as they pursue higher education or transition into the workforce.

The campus also serves as a satellite branch of Central Carolina Technical College. Through this partnership, students are afforded the opportunity



to enroll in dual-credit programs allowing them to obtain transferable credits toward college. Via the Early College Honors Program, a student can even graduate with an associate's degree along with their high school diploma.



F.E. DuBose Career Center Career and Technical Education Programs

- Automotive Technology
- Business & Information Technology
- Building Construction
- Cosmetology
- Culinary Arts Management
- Early Childhood Education
- Health Science and Clinical Studies
- Law Enforcement Services
- Welding Technology

CLARENDON COUNTY

Destination Business and Industry

Uniquely situated along the growing **Interstate 95** corridor of opportunity with **6 interchanges**, Clarendon County offers seven industrial sites located throughout its 607 square miles of business-friendly soil.

With ample infrastructure and green field sites ranging from
◀ . . . **15 to 1400 acres and a 50,000 square foot speculative . . .** ▶
building we are sure you will not only find the community welcoming, but a great place to sustain and grow your business.



The Port of Charleston is an **80 mile drive** away and **saw its busiest cargo volumes in its history during fiscal year 2022**. The port terminals handled 2.85 million TEUs, a common industry measurement representing 20-foot equivalent boxes. This is up 12% from fiscal year 2021.



The state's largest cargo airport, Columbia Metropolitan Airport, is only 60 miles away and offers access to international travel. The airport is also home to hubs for UPS, Federal Express and DHL.

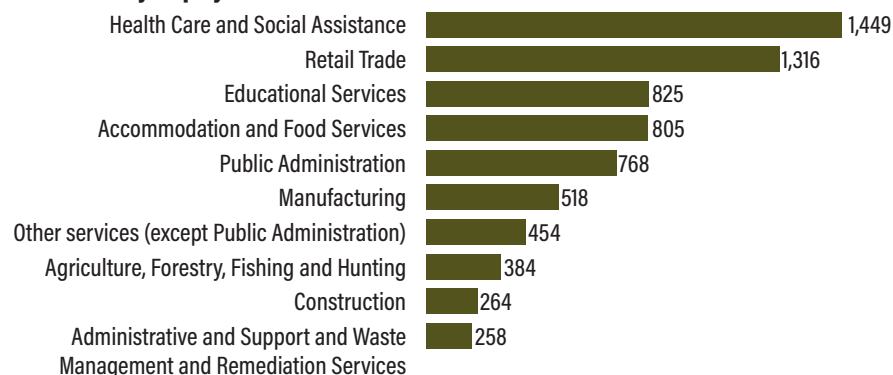


READY FOR BUSINESS

- Some of the more well-known companies that call Clarendon County home include, **Bicycle Corporation of America, Alucoil, Meritor, Georgia Pacific, Provalus and Westinghouse** to name a few.
- With an **ample labor force of over 211,036 within a 60-minute drive time**, Clarendon County offers what your business needs to be successful.
- Clarendon County offers a **very aggressive incentive structure** and is willing to partner with prospective companies to ensure success.
- All properties in Clarendon County are County Owned and **certified to South Carolina Department of Commerce standards**.

Working in Clarendon County, by the numbers

Top 10 Industries by Employment



Top 10 Average Annual Wage by Industry



Underemployment in Clarendon County

Underemployment is a measure of employed individuals who are either working parttime but preferring a full-time position, working in a non-permanent position but preferring a permanent job, or "overqualified" for their current position due to factors like training, education, pay scale, and job satisfaction. There are an estimated 2,638 underemployed workers in this region. These individuals are potentially available for work opportunities in new and expanded facilities.

Default	Total	%
Overall Underemployment	2,638	15.1%
Overall Manufacturing Underemployment	61	12.7%
Blue Collar Underemployment	935	16.1%
Production and Distribution Underemployment	461	16.3%
White Collar Underemployment	1589	14.2%
Engineering and Science Underemployment	42	10.0%

Sources: S.C. Department of Employment & Workforce, S.C. Power Team

CLARENDON COUNTY

Destination Recreation

Experience nature's playground



Our moderate weather allows for year-round outdoor recreation. Tee off at one of our signature golf courses and enjoy a challenging game.

The Clarendon County Recreation Department offers an array of organized sports for varying ages including a year-round youth golf program, unique to our area.

Lake Marion is known for signature fishing and is the birthplace of the original

land-locked striped bass. Each year local, regional and national fishing tournaments are held on the expansive lake, such as the Bassmaster Elite Series.

Lake Marion visitors can travel to Charleston by boat from Clarendon County through the locks making a day trip to the Holy City an accessible possibility and a delightful way to avoid typical downtown traffic.

There are several camp opportunities



for children found in Clarendon County as well including Camp Woodie and Camp Leopold, which are both wildlife focused. Camp Bob Cooper is the home of Clarendon County 4-H camp.

Numerous festivals and events are held throughout the year in Clarendon County including the famous Striped Bass Festival, the Puddin' Swamp Festival and Duckfest.



Weldon Auditorium



Summerton Cultural Arts Center

Former high school auditoriums in Manning and Summerton have been renovated extensively to host cultural events, concerts and nationally known performances.



Lake Marion is home to some of the best fishing in the country.

An outdoor lover's paradise, Clarendon County offers many great opportunities to get outside and enjoy. Established in 1941, the Santee National Wildlife Refuge covers 13,000 acres of land along Lake Marion across four units: Bluff, Cuddo, Dingle Pond and Pine Island. Visitors can

hike, bike, drive and even kayak the trails to explore and observe an abundance of wildlife that calls the area home. The refuge is also home to the Santee Indian Mound, a historical site dating all the way back to 1200 A.D. The Palmetto Trail runs through Clarendon County and is South



Many outdoor recreation opportunities can be found throughout the county.

Carolina's premier cross-state trail for hiking, backpacking, cycling, mountain biking, camping and other active outdoor recreation.

Places to see:

- Pocotaligo Nature Walk
- Palmetto Trail - Lake Marion Passage
- Santee Dam
- Santee National Wildlife Refuge
- Swamp Fox Mural Trail

Clarendon County Parks



J.C. Britton Park

803-473-3543

3057 Raccoon Rd.
Manning, SC 29102

- 4 Baseball/Softball Fields
- 2 Playgrounds
- 2 Basketball Courts
- 2 Tennis Courts
- 1 Picnic Shelter
- 1 Concession Facility

Taw Caw Park

803-473-3543

7212 Wash Davis Rd.
Summerton, SC 29148

- 36 Acre Park on Taw Caw Creek
- 1 Boat Landing
- 4 Fishing Piers
- 1 Playground
- 2 Picnic Shelters and Numerous Picnic Tables and Grills
- 1 Volleyball Court
- Boardwalk

Walker Gamble Park

803-473-3543

2496 Walker Gamble Rd.
New Zion, SC 29111

- 1 Baseball/Softball Field
- 1 Basketball Court
- 1 Tennis Court

Gibbons Street Park

803-435-8477

240 Gibbons St.
Manning, SC 29102

- 1 Picnic Shelter
- 1 Splash Pad
- 2 Playgrounds



CLARENDON COUNTY

Destination History

Take a step back in time

Original settlers of the area included the Scots-Irish and the Huguenots who came here to avoid religious persecution. They traveled inland from Charleston around 1700 and received land grants in our area.

Clarendon County is named for Edward Hyde, the Earl of Clarendon. He

was Lord High Chancellor of England and was appointed Lord Proprietor over this area.

Many areas of historical significance can be found throughout the county.

Revolutionary War battles were forged in Clarendon County prior to the establishment of Manning, the county

seat. The Swamp Fox Murals Trail Society provides unique attractions for residents and visitors alike. The Society was formed in 2004 as an effort to promote and preserve the history of General Francis Marion with murals depicting scenes from the American Revolution, which can be found throughout the county.

Trace the steps of General Francis Marion in the very place where he earned the Swamp Fox moniker and visit the hallowed ground on which Revolutionary War battles were forged.





Your journey along Clarendon County's historic path is just a hint of the treasures we have to offer. In recent years Clarendon County has seen a great deal of restoration and many historic buildings have been refurbished and are now home to several businesses. Our very own Summerton was instrumental in the nation's Civil Rights

movement. Meetings held in the Historic Liberty Hill AME Church during 1940s and 50s led to the local Briggs v. Elliott case, which was part of Brown v. Board of Education leading to the desegregation of public schools in the United States making Clarendon County a cornerstone for United States history.



Notable people from Clarendon County

Home to five S.C. governors

- James Burchill Richardson, served 1802-1804
- Richard Irvine Manning I, served 1824-1826
- John Peter Richardson II, served 1840-1842
- John Lawrence Manning, served 1852-1854
- John Peter Richardson III, served 1886-1890

Anne Worsham Richardson, renowned artist known for her paintings of birds

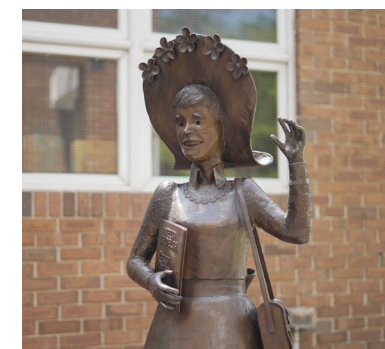
Peggy Parish, famed children's author best known for her *Amelia Bedelia* series

In the early 1950s, **Althea Gibson** became the first African-American to compete in both the US National Tennis Championships and Wimbledon. In 1960, she became the first African-American to compete on the women's professional golf tour.



Marion McKnight, Miss America 1957

MUST SEE



Amelia Bedelia

Born in Manning, Margaret "Peggy" Parish made writing stories - including fiction, nonfiction, and craft books - for children her life's work. By far, her most popular and well-known books are the *Amelia Bedelia* books: a housekeeper who takes all of her employers' instructions literally resulting in comedy that delights children even today. Peggy Parish was also a supporter of the Harvin Clarendon Public Library and a statue of Amelia Bedelia is located in front of the library. Parish's work is continued by her nephew, Herman Parish.

Source: *South Carolina Day by Day Family Literacy Calendar*

CLARENDON COUNTY

Destination Home

Live your best life here



We are uniquely familiar. We are nostalgic. We are tranquility. We are Clarendon County.

A place where natural wonders embrace relaxing lifestyles. Where you are in the midst of it all, yet only a short drive from mountain tops to sandy shores. A place to retreat from the noise of a busy lifestyle.

*Look no further...
Destination Home*

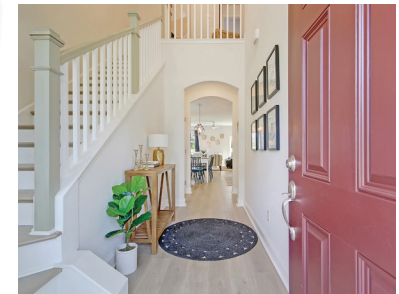
Manning

Manning was named after Governor John Laurence Manning in 1855. As the county seat, it serves as the hub for administration. The first mayor, Dr. George Allen Huggins, declared Manning to be a “garden spot” and today beautiful plants and trees bloom throughout town.

Manning is home to many shops and restaurants and is a convenient stop off I-95. Many historic buildings have been



restored and the town exudes Southern charm making it a great place to sip, shop and stroll. Be sure to visit Brooks Street once dubbed, “The most beautiful street between Maine and Miami.” Its charm matches its slogan, “Matchless for Beauty and Hospitality.”



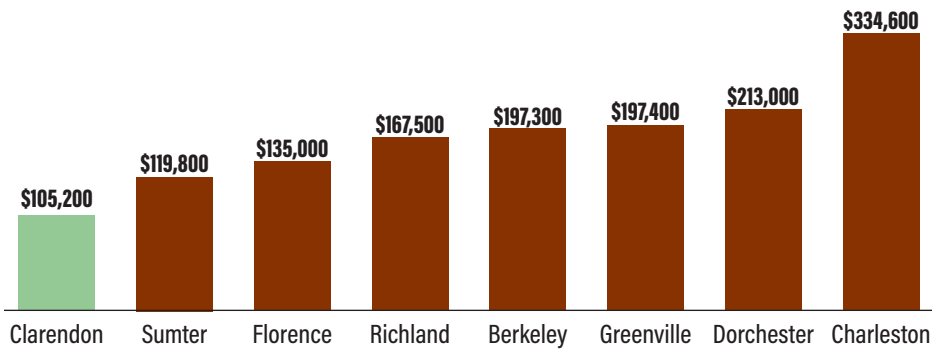
hq
HUNTER QUINN
HOMES

Enjoy lake country living at its finest with South Carolina's Builder of Choice. The Gregory Pointe community presented by Hunter Quinn Homes offers a golf course lifestyle in a quiet, relaxed setting.

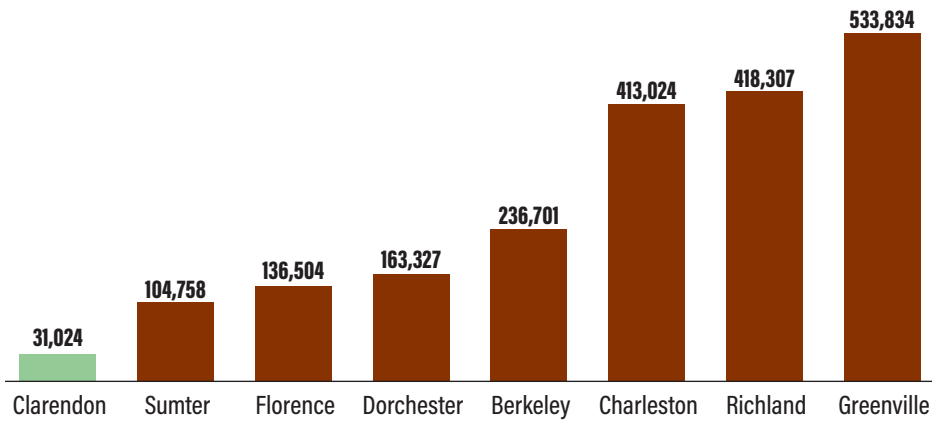
Comparing Clarendon County

Clarendon County has a smaller population and a much more affordable cost for a home than other counties in the area.

Median Housing Value, by County



2021 Population Estimates, by County



Source: U.S. Census Bureau

Paxville

Paxville is located in the western part of Clarendon County and dates back to the mid 1700s when George III of England gave 10,000 acres of land in South Carolina to a relative. In the 1820s Paxville was receiving regular mail deliveries from Charleston, and the Northwestern Railroad once cut through the center of town. Today, Paxville offers its residents a slower-paced lifestyle with several places of worship and a park for recreation.

Summerton

FAST FACTS
Population: 31,024
Median Household Income:\$43,881
Number of Employers:493
Number of Veterans:..... 2,335
Source: U.S. Census Bureau

Summerton marks the southern border of Clarendon County. Easy access to Lake Marion and proximity to I-95 make anything a short boat trip or car ride away. It was first known as the “Summer Town” when residents of the Charleston area would travel up the Santee River seeking relief from the heat and mosquitoes. The first home in Summerton can be traced back to 1820, although the town was not chartered until 1889. Today, 12 antebellum homes remain

in the area, and shops and restaurants occupy historic buildings along downtown streets.

Turbeville

Turbeville borders Clarendon County to the north and was first established between 1870 and 1875 by William J. Turbeville. The first post office opened in 1898 and the town was chartered 16 years later. Over the years, Turbeville has served as a great stop for travelers headed to the coastline of the Carolinas. Its large town square hosts the legendary Puddin’ Swamp Festival each spring bringing the community together to celebrate its history. Several shops

and restaurants now line the streets of Turbeville. Beautification and revitalization projects have led to many improvements and growth in recent years.



DESTINATION CLARENDON

A RELOCATION GUIDE TO CLARENDON COUNTY



19 N Brooks Street
Manning, S.C. 29102
803.435.4405
www.clarendoncounty.com



411 Sunset Drive
Manning, S.C. 29102
803.435.8813
www.clarendoncountyusa.com

Designed and published by:



VISUAL
INFONOMICS
GROUP

www.visualinfonomics.com